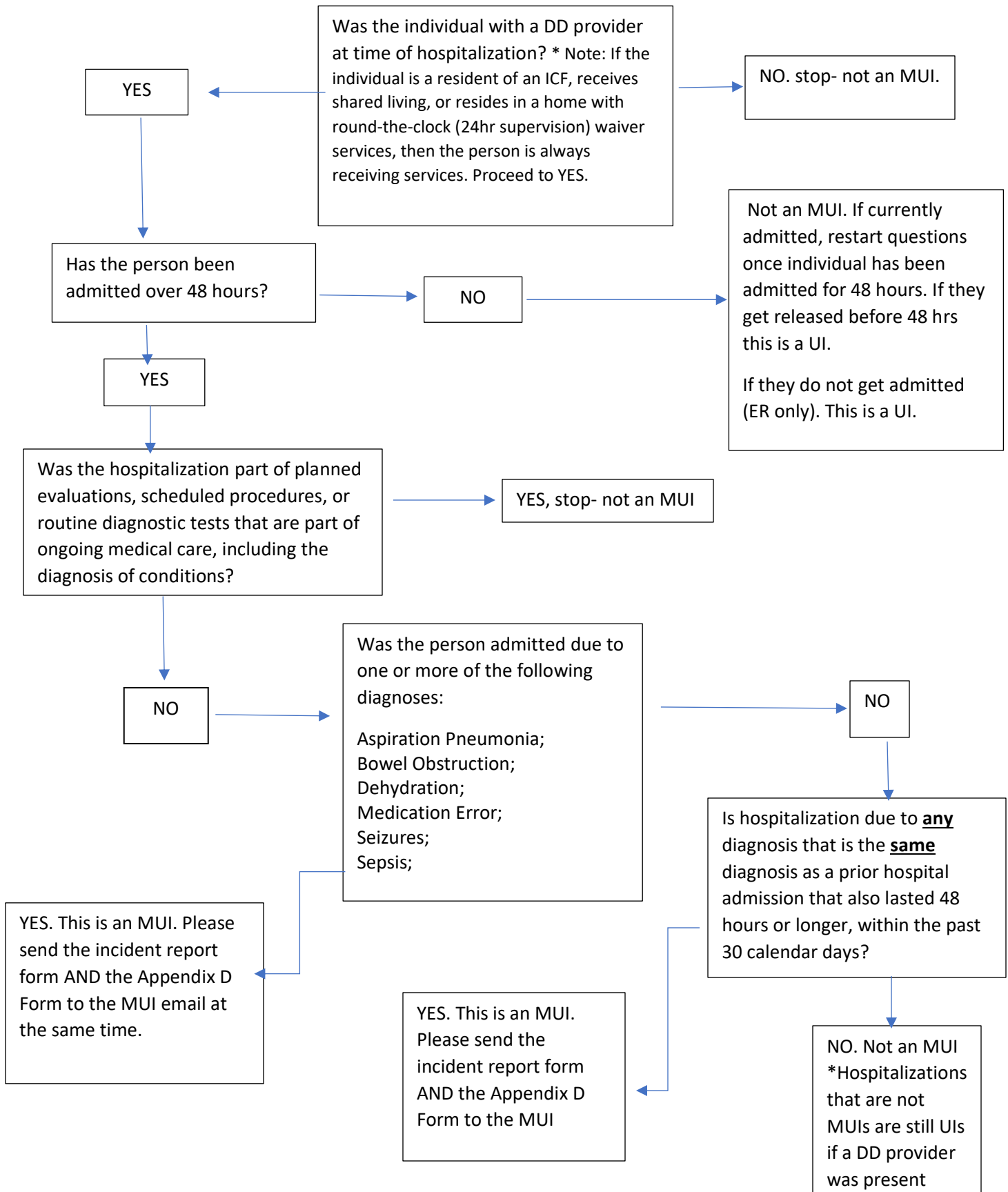


# Hospitalization UI/MUI Determination Flow Chart



Note: Incident Reports and Hospitalization Forms are due to the MUI email by 3pm the day after it is determined that incident is an MUI. If still in hospital after 48 hours, Provider must be in contact with medical team to determine reason for admission. Email to [MUI@marioncountydd.org](mailto:MUI@marioncountydd.org).